

# Beachlands Avenues Ltd

## Subdivision

Prepared by LA4 Landscape Architects.

Issue 08.07.2013

### Contained in this Document:

Street Planting	13165 STPP01-07
Reserve Planting	13165 RPP01-04
Stormwater Pond Planting	13165 SWPP01-03
Reserve Concept	13165 CO01





KEY

*Dysoxylum spectabile* (Kohekohe)

*Corynocarpus laevigatus* (Karaka)

*Metrosideros 'Maori Princess'* (Pohutukawa)



Sheet Layout

Notes:  
Refer to Sheet 6 for Planting Schedule

Beachlands Avenues Ltd  
Subdivision  
Street Planting Plan Layout

Sheet 1 of 7  
Scale: 1:5000 @ A3  
Date: 31.05.2013  
Ref. #: 13165 STPP01

Amendments	
Date/Comments	
Rev. A 20.06.2013	
Rev. B 05.07.2013	

LA4 Landscape Architects

26 Kitchener Street, Auckland  
P.O. Box 5669, Wellesley Street, Auckland  
p: 09 358 0904 f: 09 358 0895  
e: la4@la4.co.nz  
www.la4.co.nz



LA4

This drawing and its contents are subject to copyright and shall only be used with the express permission of LA4 Landscape Architects



KEY

*Pittosporum crassifolium* (Karo) hedge  
along Jack Lachlan Road Frontage

*Dysoxylum spectabile* (Kohekohe)

*Corynocarpus laevigatus* (Karaka)

*Metrosideros 'Maori Princess'* (Pohutukawa)

*Rhopalostylis chathamica 'Pitti'* (Nikau)

Streetlights



Notes:  
Refer to Sheet 6 for Planting Schedule

Beachlands Avenues Ltd  
Subdivision  
Street Planting Plan

Sheet 2 of 7  
Scale: 1:1500 @ A3  
Date: 31.05.2013  
Ref. #: 13165 STPP02

Amendments

Date/Comments
Rev. A 20.06.2013
Rev. B 05.07.2013

LA4 Landscape Architects  
26 Kitchener Street, Auckland  
P.O. Box 5669, Wellesley Street, Auckland  
p: 09 358 0904 f: 09 358 0895  
e: la4@la4.co.nz  
www.la4.co.nz

  
LA4

This drawing and its contents are subject to copyright and shall only be used with the express permission of LA4 Landscape Architects





KEY

- Pittosporum crassifolium* (Karo) hedge along Jack Lachlan Road Frontage
- Dysoxylum spectabile* (Kohekohe)
- Corynocarpus laevigatus* (Karaka)
- Metrosideros* 'Maori Princess' (Pohutukawa)
- Rhopalostylis chathamica* 'Pitti' (Nikau)
- Streetlights



Notes:  
Refer to Sheet 6 for Planting Schedule

**Beachlands Avenues Ltd  
Subdivision  
Street Planting Plan**

Sheet 3 of 7  
Scale: 1:1500 @ A3  
Date: 31.05.2013  
Ref. #: 13165 STPP03

Amendments	
Date/Comments	
Rev. A 20.06.2013	
Rev. B 05.07.2013	

LA4 Landscape Architects  
28 Kitchener Street, Auckland  
P.O. Box 5569, Wellesley Street, Auckland  
p: 09 358 0904 f: 09 358 0895  
e: la4@la4.co.nz  
www.la4.co.nz



**LA4**

This drawing and its contents are subject to copyright and shall only be used with the express permission of LA4 Landscape Architects





Refer to STOPP05 for Buffer Planting

Notes:  
Refer to Sheet 6 for Planting Schedule

**Beachlands Avenues Ltd**  
**Subdivision**  
**Street Planting Plan**

Sheet 4 of 7  
Scale: 1:1500 @ A3  
Date: 31.05.2013  
Ref. #: 13165 STPP04


Amendments	
Date/Comments	
Rev A. 20.06.2013	
Rev. B 05.07.2013	

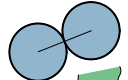



LA4 Landscape Architects  
26 Kitchener Street, Auckland  
P.O. Box 5669, Wellesley Street, Auckland  
p: 09 358 0904 f: 09 358 0895  
e: la4@la4.co.nz www.la4.co.nz


This drawing and its contents are subject to copyright and shall only be used with the express permission of LA4 Landscape Architects

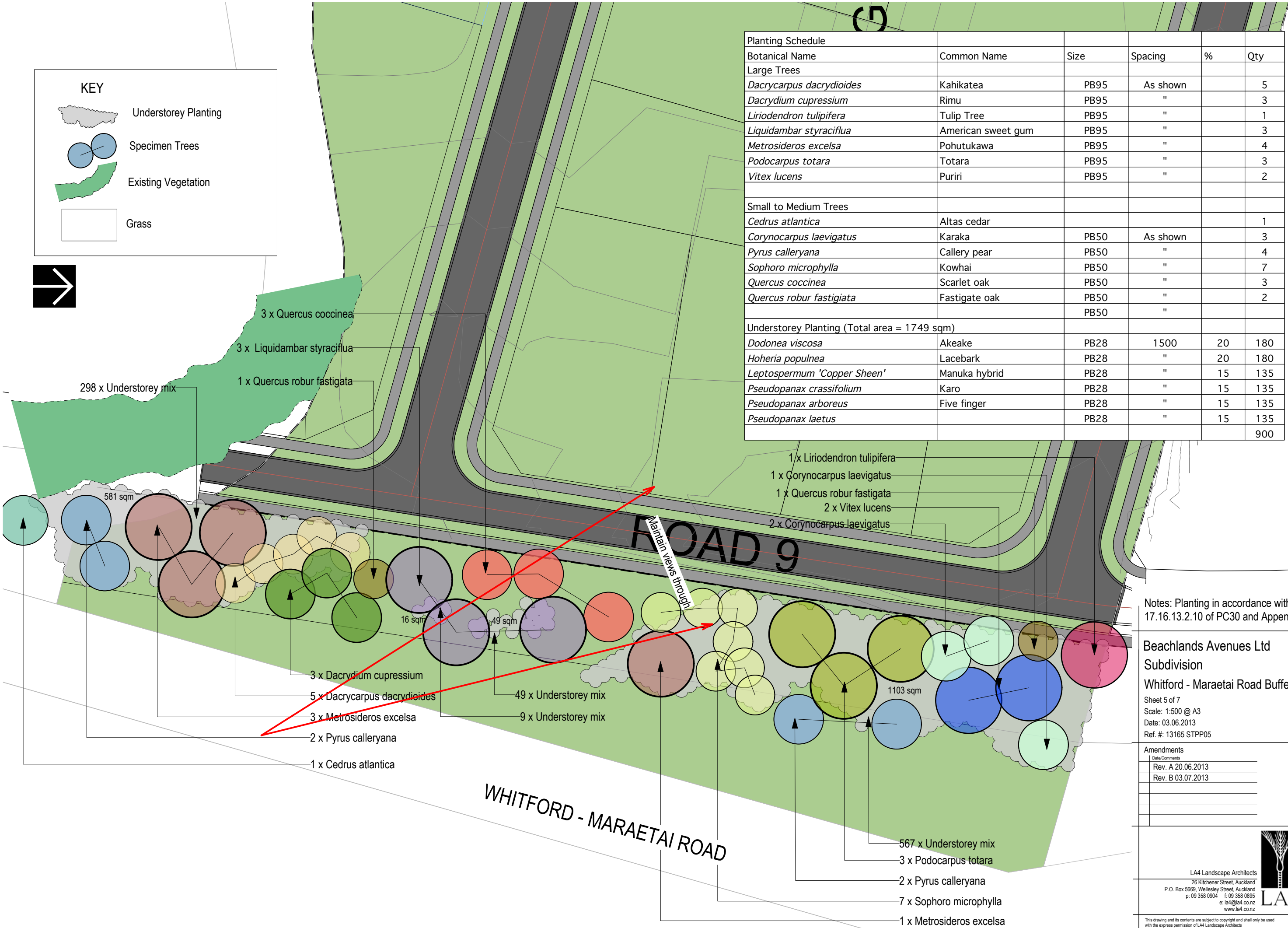
KEY

 Understorey Planting

 Specimen Trees

 Existing Vegetation

 Grass



Notes: Planting in accordance with Rule 17.16.13.2.10 of PC30 and Appendix B

Beachlands Avenues Ltd  
Subdivision  
Whitford - Maraetai Road Buffer Planting

Sheet 5 of 7  
Scale: 1:500 @ A3  
Date: 03.06.2013  
Ref. #: 13165 STPP05

Amendments	
Date/Comments	
Rev. A 20.06.2013	
Rev. B 03.07.2013	

LA4 Landscape Architects

26 Kitchener Street, Auckland  
P.O. Box 5669, Wellesley Street, Auckland  
p: 09 358 0904 f: 09 358 0895  
e: la4@la4.co.nz  
www.la4.co.nz

  
LA4

This drawing and its contents are subject to copyright and shall only be used with the express permission of LA4 Landscape Architects





Street Tree Planting Schedule				
Botanical Name	Common Name	Size	Spacing	Qty
<i>Corynocarpus laevigatus</i>	Karaka	PB150	as shown	94
<i>Dysoxylum spectabile</i>	Kohekohe	PB150	as shown	63
<i>Metrosideros 'Maori Princess'</i>	Pohutukawa	PB150	as shown	136
<i>Rhopalostylis chathamica 'Pitti'</i>	Nikau	PB95	as shown	24



*Corynocarpus laevigatus*



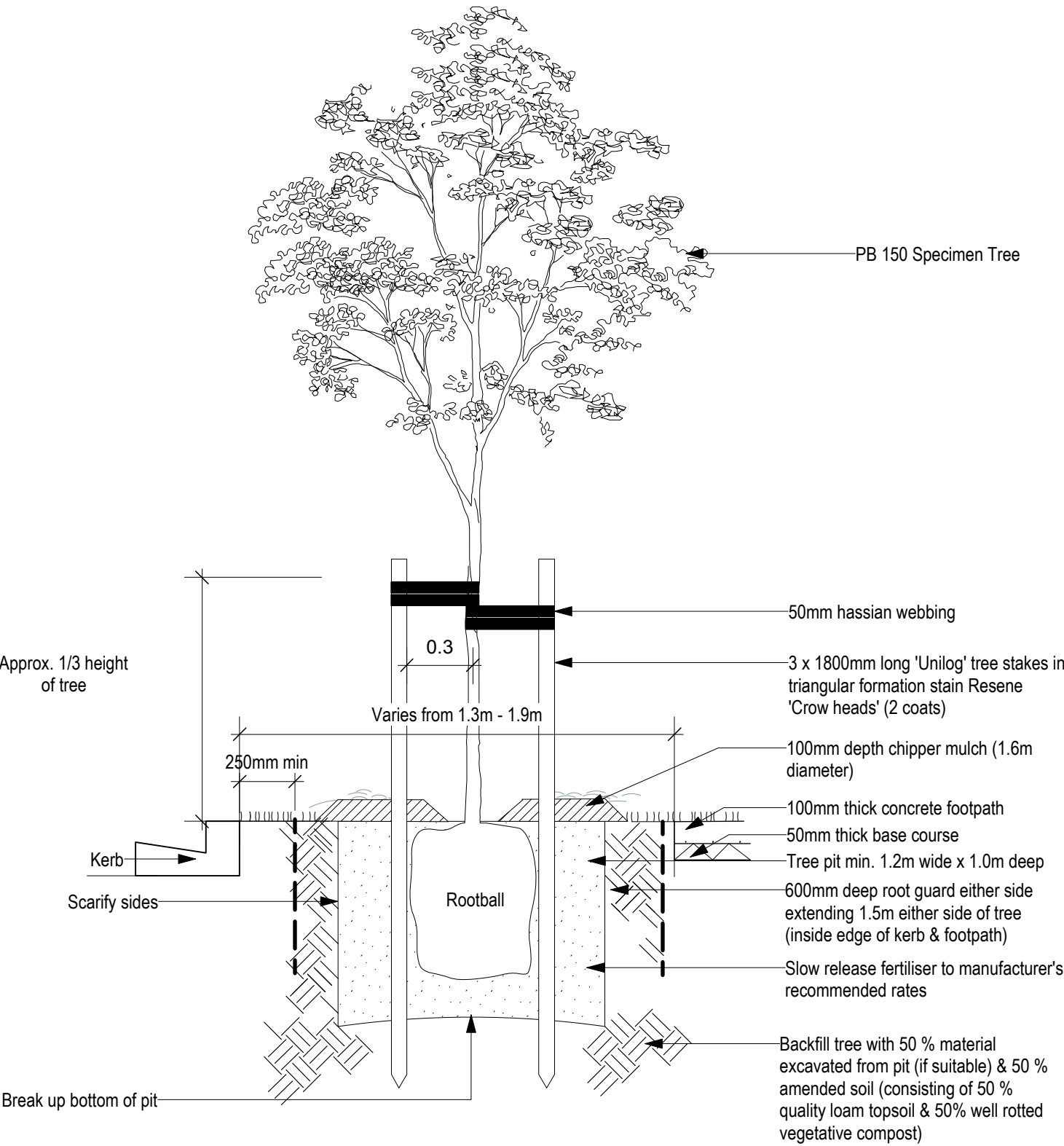
*Dysoxylum spectabile*



*Metrosideros 'Maori Princess'*



*Rhopalostylis chathamica 'Pitti'*

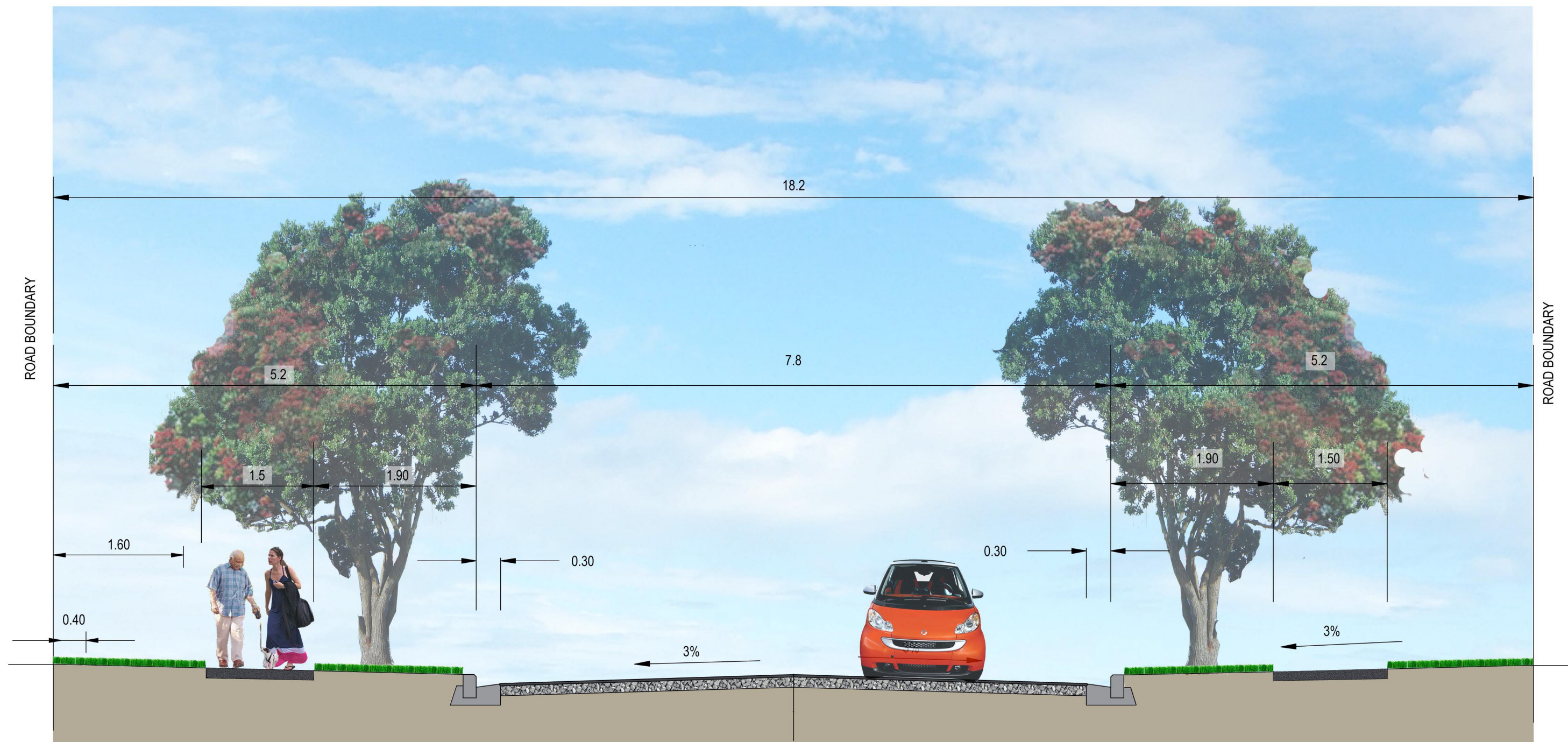


Tree Pit Detail Scale 1:25 @ A3

Beachlands Avenues Ltd  
Subdivision  
Planting Schedule & Tree Pit Detail  
Sheet 6 of 7  
Scale: 1: 25 @ A3  
Date: 31.05.2013  
Ref. #: 13165 STPP07

Amendments	
Date/Comments	
Rev. A 03.07.2013	
Rev. B 05.07.2013	





TYPICAL ROAD SECTION - ROADS 2 TO 8

Beachlands Avenues Ltd  
Subdivision  
Typical Road Cross Section

Sheet : 7 of 7  
Scale: 1:100 @A3  
Date: 04.07.2013  
Ref. #: 13165STPP07

Amendments

Date/Comments

LA4 Landscape Architects  
26 Kitchener Street, Auckland  
P.O. Box 5669, Wellesley Street, Auckland  
p: 09 358 0904 f: 09 358 0995  
e: la4@la4.co.nz  
www.la4.co.nz



LA4

This drawing and its contents are subject to copyright and shall only be used with the express permission of LA4 Landscape Architects